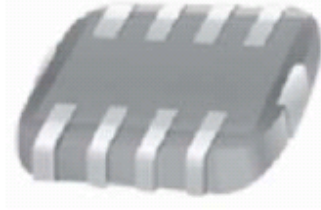


## Multilayer Chip ESD Filter 叠层片式 ESD 滤波器

### FEATURES 特点

- **Multilayer monolithic construction yields high reliability**  
独石结构生产，高可靠性
- **Excellent solderability and heat resistance for either flow or reflow soldering** 良好的可焊性和耐焊性
- **Low Leakage current** 低的漏电流值
- **Low inductance and fast response**  
低的漏电感和极短响应时间



### APPLICATIONS 应用

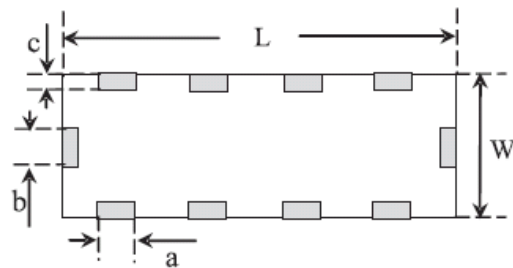
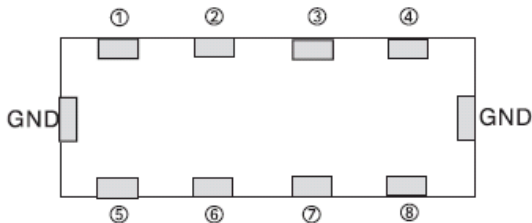
- **ESD protection** 防静电保护
- **ECU protection** 电子控制单元保护
- **I/O protection** 输入/输出保护
- **LCD display** 液晶显示技术

### Product Identification 产品标识

ZF      21      V4      180      C150      R101      I      -      LF  
①          ②          ③          ④          ⑤          ⑥          ⑦          -          ⑧

- ① **Series name** 系列名称
- ② **Dimension** 产品尺寸 LxW: 【21=2.0mm×1.25mm】
- ③ **Number of element: 4 Element**
- ④ **Working Voltage** 工作电压: 【180=18V】
- ⑤ **Capacitance** 电容值: 【C150=15pf】
- ⑥ **Resistance** 电阻值: 【R101: 100Ω】
- ⑦ **Packing Style** 包装方式: 【T: Taping 编带盘装    B: Bulk 散装】
- ⑧ **Lead free products** 无铅产品

### Shapes And Dimensions 外形及尺寸示意图



Type 型号	Dimensions (mm) [inch]						
	L长	W宽	T高	a	b	c	d
21 [0805]	2.00±0.20 [0.079±0.008]	1.25±0.20 [0.049±0.008]	0.55±0.10 [0.022±0.004]	0.25±0.10 [0.010±0.004]	0.40±0.10 [0.016±0.004]	0.20±0.15 [0.008±0.006]	0.50±0.05 [0.020±0.002]

## Multilayer Chip ESD Filter 叠层片式 ESD 滤波器

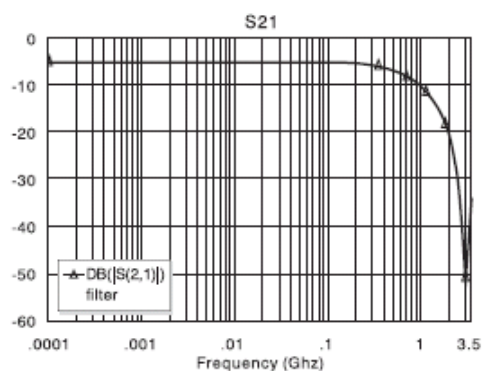
### Electrical Characteristics 电气性能

#### ZF 21 (0805) Series

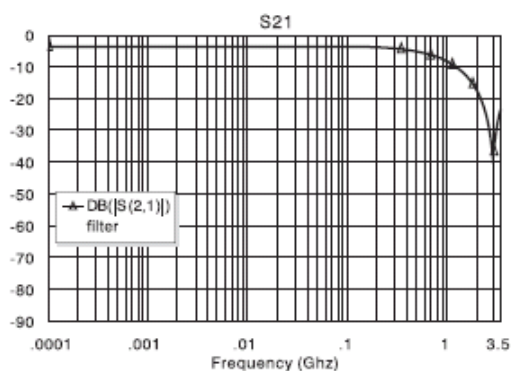
Part No.	Cut-off Frequency	ATT Characteristics	Max Working Voltage	Varistor Voltage	Max Clamping Voltage	Peak Current	Typical Capacitance	Resistance
Test conditions	-3dB	Minsmum 20 dB ATT	<50uA	@1 mA DC	8/20us @ 1A	8/20us	@0.5Vrms 1MHz	
Symbol	MHz	MHz	V <sub>WM</sub> (V)	V <sub>S</sub> (V)	V <sub>C</sub> (V)	I <sub>P</sub> (A)	C (pF)	R(Ω)
ZF21V4180C050R101	650	2500~3500	18	80~120	130	3	5	100
ZF21V4180C070R100	370	2500~4000	18	55~85	130	3	7.5	10
ZF21V4180C070R101	330	1800~2500	18	55~85	130	5	7.5	100
ZF21V4180C150R500	190	900~2000	18	24~36	50	10	15	50
ZF21V4180C150R101	180	900~2000	18	24~36	50	10	15	100
ZF21V4180C150R201	170	900~2000	18	24~36	50	10	15	200
ZF21V45R6C250R500	110	800~2000	5.6	15~25	35	15	25	50
ZF21V45R6C250R101	110	800~2000	5.6	15~25	35	15	25	100
ZF21V45R6C250R201	120	800~2000	5.6	15~25	35	15	25	200
ZF21V45R6C250R401	130	800~2000	5.6	15~25	35	15	25	400
ZF21V45R6C300R101	95	700~1900	5.6	15~25	35	15	30	100
ZF21V49R0C500R101	55	500~1900	9.0	16~26	35	10	50	100

### Characteristic curve 特性曲线

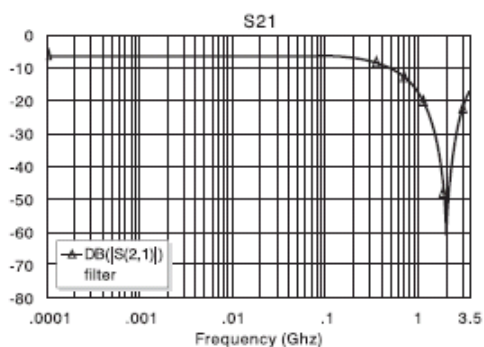
ZF21V4180C050R101



ZF21V4180C070R100



ZF21V4180C070R101



ZF21V4180C150R500

